



# TREOSTAR / TREOSTAR PULSE



TREOSTAR



TREOSTAR PULSE



## SINGLE PHASE SYNERGIC MULTIPROCESS INVERTER COMPACT POWER SOURCES

Great flexibility in use and portability are main features of TREOSTAR 1800 and TREOSTAR 2000 PULSE, multiprocess (MIG/MAG, MMA and TIG “Lift”) synergic inverter equipment, whilst only the latter additionally enables the PULSE/ DUAL PULSE facility.

Both of them offer high quality welding characteristics on all materials and mostly on stainless steel, aluminium and zinc coated steel, by really minimizing any reworking job due to spatters.

Innovative, versatile, light, easy-to-carry and user friendly, TREOSTAR power sources, because of their very high technological conception, are absolutely unique in any external and internal maintenance application, car body repair, agriculture and light fabrication work

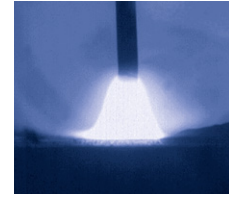


- ▶ Multiprocess power sources: MMA - TIG Lift - MIG/MAG Synergic & Manual and, only for TREOSTAR 2000 PULSE, MIG PULSE and DUAL PULSE
- ▶ Digital control of the welding parameters with synergic curves preset according to used type of material, gas and wire diameter
- ▶ User friendly and easy-to-use selection and recalling of the parameters and welding programs
- ▶ Ability to store personalized welding parameters up to 99 JOBS
- ▶ Built-in polarity changeover facility for most common gas and gasless wires
- ▶ Control rack protection cover
- ▶ Smart “PROGRAM” key for quickly selecting any program
- ▶ Professional wire feeding mechanism with 37 mm large rolls
- ▶ Double groove rolls replaceable without any tool
- ▶ “Energy saving” function to operate the power source cooling fan only when necessary
- ▶ Possibility of using 300 mm Ø coils by means of the Retrofit Kit (optional)
- ▶ VRD – Voltage Reduction Device



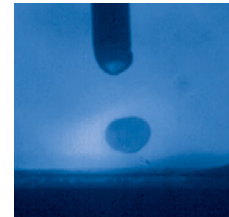


vision.ARC is the innovative welding arc control developed by CEA granting a short arc extremely stable and precise in spite of any change of the external conditions. vision.ARC ensures outstanding performances, impossible to be obtained by traditional power sources.



### VISION.PULSE (TREOSTAR 2000 PULSE)

vision.PULSE permits a short arc pulse welding, constantly controlled, by optimizing the results of traditional pulse welding. This enables to reduce the high heat input, typical in pulse welding, with a consequent reduction in distortions, an improvement in the puddle and considerable increase in welding speed too.



### DUAL.PULSE (TREOSTAR 2000 PULSE)

Dual Pulse favours a further reduction in the heat transfer to the workpiece by minimizing its deformation and produces premium quality aesthetic beads similar to TIG finishing. Dual Pulse is extremely useful mostly when welding aluminium and stainless steel.



### ACCESSORIES

- Retrofit kit adaptor for Ø 300 mm wire spool
- Gas cylinder trolley

TECHNICAL DATA		TREOSTAR 1800			TREOSTAR 2000 PULSE		
		MIG/MAG	TIG	MMA	MIG/MAG	TIG	MMA
Single phase input 50/60 Hz	V <sup>+15%</sup> <sub>-15%</sub>	230			230		
Input Power @ I <sub>2</sub> Max	kVA	8,1	6,4	7,8	9,7	6,4	7,8
Delayed Fuse (I <sub>eff</sub> )	A	16	16	16	16	16	16
Power Factor / cos φ		0,63/0,99	0,63/0,99	0,63/0,99	0,64/0,99	0,64/0,99	0,64/0,99
Efficiency Degree		0,83	0,8	0,83	0,83	0,8	0,83
Open circuit voltage	V	60	60	60	60	60	60
Current range	A	10 - 175	5 - 175	10 - 150	10 - 200	5 - 175	10 - 150
Duty cycle at (40°C)	A 100%	100	100	90	100	100	90
	A 60%	115	115	110	115	115	110
	A X%	175 (20%)	175 (20%)	150 (25%)	200 (15%)	175 (20%)	150 (25%)
Wires	Ø mm	0,6 - 1,2	---	---	0,6 - 1,2	---	---
Coil	Ø mm	200 max (300 opt.)	---	---	200 max (300 opt.)	---	---
Standards		EN 60974-1 • EN 60974-5 • EN 60974-10 <b>S</b>			EN 60974-1 • EN 60974-5 • EN 60974-10 <b>S</b>		
Protection Class	IP	23 S			23 S		
Insulation class		H			H		
Dimensions		500X220X425 mm			500X220X425 mm		
Weight	kg	16			16		

Other voltages available on request

These power sources are built for industrial environment use. EMC (CISPR 11): class A

